



PLATINUM BAY
B A R B A D O S



WELCOME TO THE BEST ADDRESS IN BARBADOS. Five beach-front villas on the exclusive Platinum Coast, each with its own uninterrupted view of one of the world's most magnificent seascapes.

Here you can enjoy the absolute privacy of your own personal oasis or explore the superb shopping, leisure, dining and sporting opportunities that the area has to offer.

Each villa has been sensitively designed to respect the environment whilst creating spaces that are ideal for carefree living and stylish entertainment. Life here is made even more appealing by the 24-hour, 5-star concierge service, on hand to take care of your every need.

There is nowhere on earth quite like Barbados. We have both been fortunate to visit and enjoy this unique and charming island on many occasions over the last 25 years. The opportunity to own your own home in such a spectacular setting comes, perhaps, just once in a lifetime.

A black ink signature of Bruce Ritchie, consisting of a long horizontal stroke with a small vertical tick mark near the center.

Bruce Ritchie

A black ink signature of Nick Leslau, written in a cursive, flowing style.

Nick Leslau



An unrivalled location...



... on the Platinum coastline

LIMEGROVE LIFESTYLE CENTRE



Barbados offers the ultimate lifestyle and Platinum Bay is the perfect location to experience this to the full.

The villas are ideally located in the centre of Holetown, in the parish of St James, just a short drive from Grantley Adams International Airport and the capital of Bridgetown.

This area, on the island's sought-after west coast, has always attracted the finest hotels and restaurants. Holetown, the island's oldest settlement, is an excellent place to shop and eat. Step out of your garden gate and the legendary Sandy Lane Hotel is just a ten-minute stroll along the beach in the next bay.

You'll also find some of the world's most prestigious brands, including Louis Vuitton, Bulgari, Armani, Ralph Lauren, Cartier and Vilebrequin, in the nearby Limegrove Lifestyle Centre.

The island's climate is attractive all year round, ideal for the active and passive outdoor life. Barbados is famous for the sporting activities it has on offer, and Platinum Bay is in the perfect location, on the West Coast of the island, to enjoy these to the full.

The villas will have access to their own tennis court, as well as being within a ten-minute drive of two of the island's most renowned golf courses – The Green Monkey and Apes Hill. The crystal clear waters on the west coast are perfect for scuba diving and other aquatic pursuits, which can be enjoyed all year round, and many of the neighbouring islands are less than a day's sail away.



THE CLIFF



LONE STAR

With some of the world's best restaurants within easy reach, such as Cin Cin, The Cliff, Lone Star and Daphne's, Platinum Bay is ideally placed for food lovers. Eating out in Barbados is always exceptional, whether it's modern European or the tantalising fusion of flavours that gives Bajan cuisine its unique character.





As well as the many sporting, cultural and food attractions that Barbados has to offer, nothing can match the pure luxury of stepping out of your villa on to the white sands of the Caribbean coast. The villas at Platinum Bay are unrivalled in their West Coast, beach front location.

This exclusive new development is limited to just five villas to ensure the utmost peace and privacy.

DIMENSIONS

House	Total sq ft (GIA)
1	19,472
2	19,497
3	18,013
4	15,646
5	14,940

Plot	Wide = Beach frontage
1	135 ft wide x 226 ft long
2	131 ft wide x 213 ft long
3	148 ft wide x 203 ft long
4	131 ft wide x 200 ft long
5	118 ft wide x 197 ft long

Pool	
1	20 ft wide x 80 ft long
2	20 ft wide x 80 ft long
3	20 ft wide x 80 ft long
4	18 ft wide x 60 ft long
5	18 ft wide x 60 ft long





The villas at Platinum Bay sit at ease in the landscape, at one with the character of this unique location. This is the style of contemporary living you would expect in Manhattan, London or Miami, although none can rival such a setting.

Contemporary yet timeless and in total harmony with its setting.

Platinum Bay is a place to relax in perfect seclusion from the outside world and, with the full-time, 5-star concierge service and unobtrusive security, nothing can disturb your peace of mind, whether you're in residence or away.







From the moment you enter your home, the view of the sea is uninterrupted and your own direct access to the beach brings it even closer.

The Barbados climate presents an open invitation to the alfresco life and the villa's exterior spaces are a constant source of temptation – to enjoy breakfast on the pool-side terrace, take a refreshing swim in your own infinity pool or dine at night beneath the stars.

The luxurious, double-height central pavilion is the perfect place to relax in comfort and admire the view across the terrace and gardens to the sparkling Caribbean Ocean beyond.

At the heart of your home, the double-aspect, family dining area, is somewhere to gather, whether you choose to eat inside or simply drift out onto the covered dining terrace or pool deck.

Behind the simple lines and timeless elegance of all the interiors lies the very latest in 21st-century smart home technology.



Wake each morning in your grand master suite to the sound of the Caribbean Sea lapping on golden sands and the breeze whispering through the palms.





Your very own,
uninterrupted view
of the sea from the
moment you wake.

This is a feature of at
least four out of six of
your villa's bedrooms.

The female master bathroom is a place to linger, luxuriate inside or admire the magnificent seascape from its private outdoor terrace.





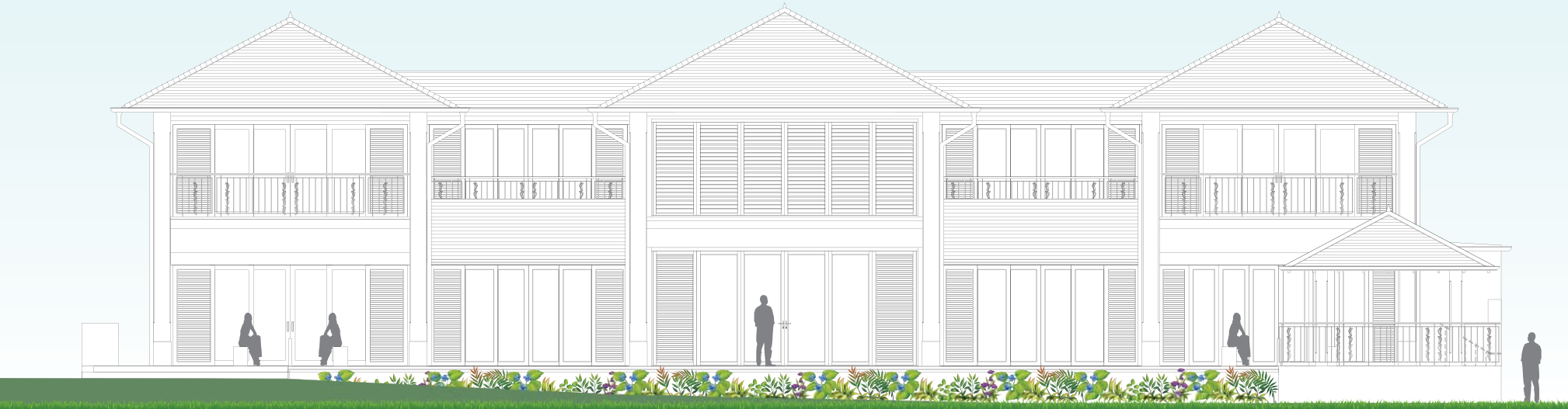
Platinum One

The homes at Platinum Bay all share the same exceptional setting, the same high level of design and finish and the same commitment to the ultimate luxury lifestyle. The detailed plans for Platinum One offer a preview of what each has to offer.

At the southern edge of the site, Platinum One offers six bedrooms all with en-suites and dressing rooms, in addition to the maid's accommodation. Great care has been taken to raise the villas to ensure that each villa enjoys uninterrupted views of the sea from all living areas and bedrooms. There is parking behind private gates for up to six vehicles.



FRONT ELEVATION – EAST FACING



REAR ELEVATION – WEST/SEA FACING

GROUND FLOOR PLAN



GROUND FLOOR	sq m	sq ft
Interior Space	556	5,985
Covered Area	134	1,441
FIRST FLOOR		
Interior Space	348	3,744
Covered Area	63	676
LOWER GROUND FLOOR		
Plant	347	3,730
Other (client fit out space)	362	3,896
Gross Floor Area Total	1,810	19,472

FIRST FLOOR PLAN





platinumbaybarbados.com